

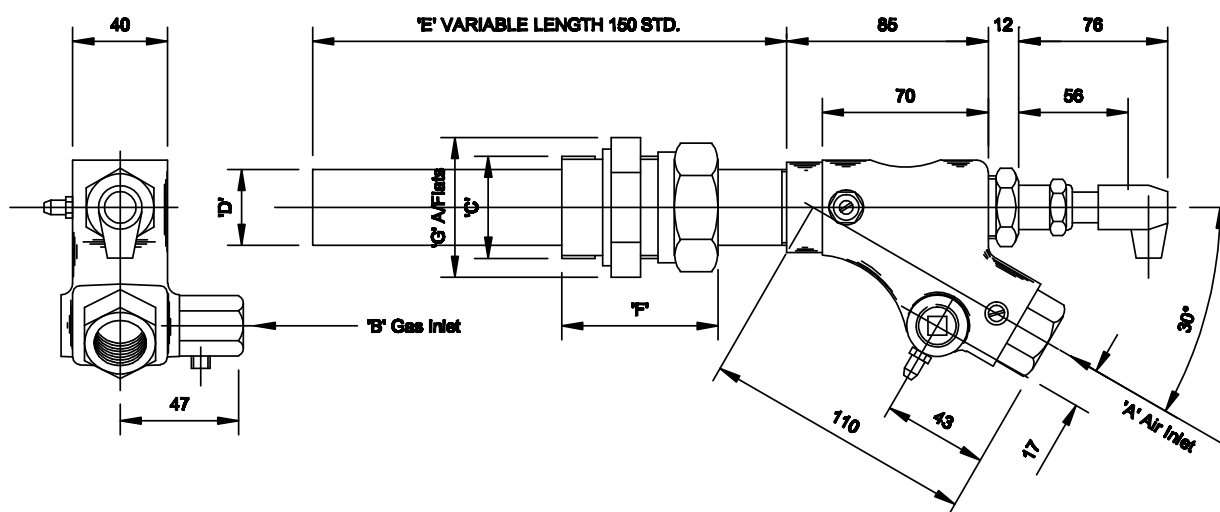
## Specifications and Capacities

### Capacities and specifications (common to all pilots)

Model No.	SPB1	SPB5	SPB20
Nominal capacity (kW)	1.5	6	20
Air pressure (mbar) - not firing *	30	30	30
Air pressure (mbar) - firing *	38	38	38
Gas pressure – standard (mbar) +	0.03	12.7	10
Gas pressure – high pressure option (mbar) ++	38	38	38
Flame length at nominal capacity (mm)	100	150	200
Recommended Gas Flexible Size (BSP)	1/4"	3/8"	3/8"
Recommended Air Flexible Size (BSP)	3/8"	1/2"	3/4"

Notes: The above data is based on Natural gas net CV 8320 kcal/Nm<sup>3</sup> – refer to Fives for operation on other fuels. \*  
The air pressure on inlet to the venturi jet on the pilot body (separate test point required to measure this).  
+ The gas pressure on the bottom of the pilot body.  
++ The gas pressure on the inlet to the venturi jet on the pilot body (separate test point required to measure this).

### PB Series Spark Ignited Pilot Burners



Model No.	Dimensions (mm)						Part No. (Standard)	Part No. (Hi Temp)	Part No. (Hi Pressure)	Weight (kg)
	A	B	C	D	F	G				
SPB.1	Rp3/8"	Rp1/4"	Rs1/2"	16	44	27	2.05.001	2.05.104	2.05.001.H	0.9
SPB.5	Rp1/2"	Rp1/4"	Rs3/4"	20	53	32	2.05.002	2.05.105	2.05.002.H	1.0
SPB.20	Rp1/2"	Rp3/8"	Rs11/4"	31	54	52	2.05.004	2.05.106	2.05.004.H	1.5

**WARNING:** The data outlined is for information only and does not form part of any contract. Our policy is one of continuous improvement and we therefore reserve the right to modify specifications or dimensions without prior warning. Situations dangerous to personnel and property can develop from incorrect installation and operation of combustion equipment. Fives North American Combustion UK, Ltd urges compliance with International, National and Local Safety Standards and that installation is carried out by properly qualified personnel.

**Fives North American Combustion UK, Ltd.**

Heath Mill Road, Wolverhampton WV5 8BD England Tel +44 (0) 1902 891200 Fax +44 (0) 1902 895552

01/2014 SPB