

Dimensions | Immersion Tube Burners

PILOTS AND FLAME SUPERVISION

Burners light reliably from a 4021-12 Pilot Tip fed by a 4031 Pilot Mixer. Air pressure to mixer must be about 16 psi, and mixture line should be cross-connected to pilot regulator. An interrupted pilot is essential when flame supervision is used.

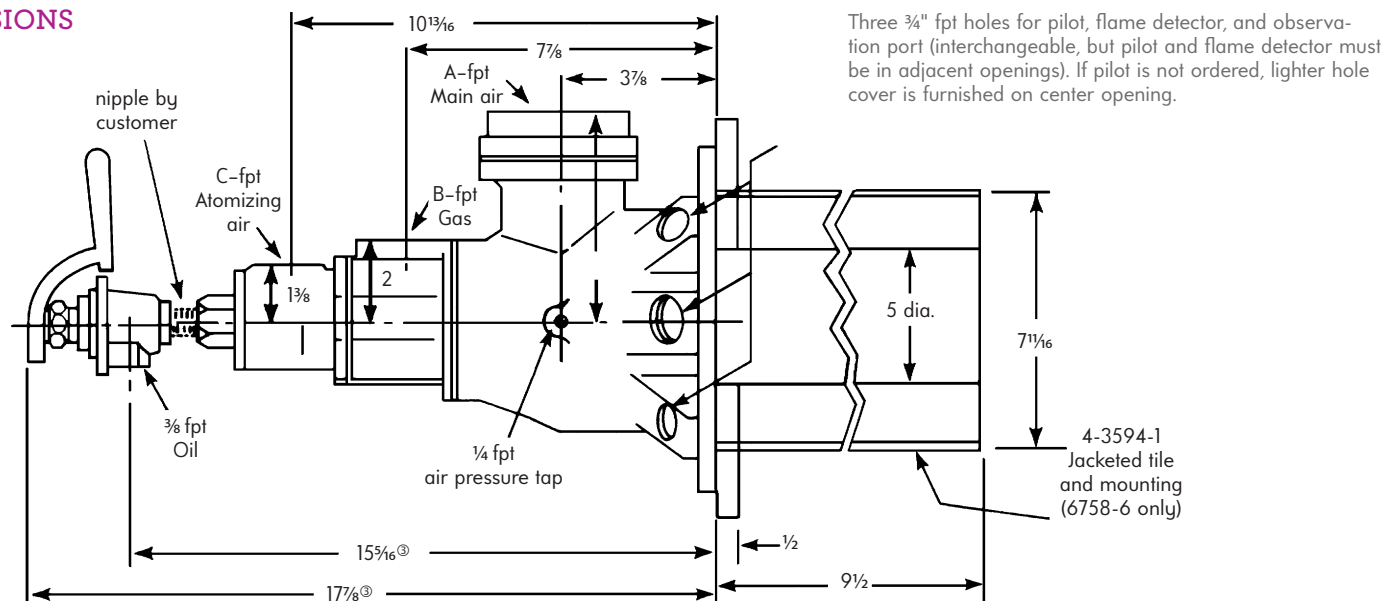
Pilot gas solenoid must be downstream of pilot gas regulator.

Ultraviolet or rod-type flame detectors can be used. Flame rods are not recommended for oil operation. See Bulletin 8832 for flame detector adapters.

Flame rod lengths from outer surface of mounting boss to rod tip are 4½" for 6758-4 and 5" for 6758-6 Burner.

For gas only applications, 4758 Burners can be specified. See also Bulletin 4762.

DIMENSIONS inches



③ These dimensions assume use of a 3/8" close pipe nipple between burner and Sensitrol Oil Valve.

Burner designation	dimensions in inches				Wt, lb	Sensitrol Oil Valve
	A	B	C	F		
6758-4	2	1¼	¾	5¼	33	1813-02-A
6758-6	3	1½	1	5⅙	68	1813-02-B

DIMENSIONS SHOWN ARE SUBJECT TO CHANGE. PLEASE OBTAIN CERTIFIED PRINTS FROM FIVES NORTH AMERICAN COMBUSTION, INC. IF SPACE LIMITATIONS OR OTHER CONSIDERATIONS MAKE EXACT DIMENSION(S) CRITICAL.

WARNING: Situations dangerous to personnel and property may exist with the operation and maintenance of any combustion equipment. The presence of fuels, oxidants, hot and cold combustion products, hot surfaces, electrical power in control and ignition circuits, etc., are inherent with any combustion application. Components in combustion systems may exceed 160°F (71°C) surface temperatures and present hot surface contact hazard. Fives North American Combustion, Inc. suggests the use of combustion systems that are in compliance with all Safety Codes, Standards, Regulations and Directives; and care in operation.

CONTACT

fna.sales@fivesgroup.com
T +1 800 626 3477 - F +1 216 373 4237

Fives North American Combustion, Inc.
4455 East 71st Street - Cleveland, OH 44105 - USA
www.fivesgroup.com



fives
Industry can do it