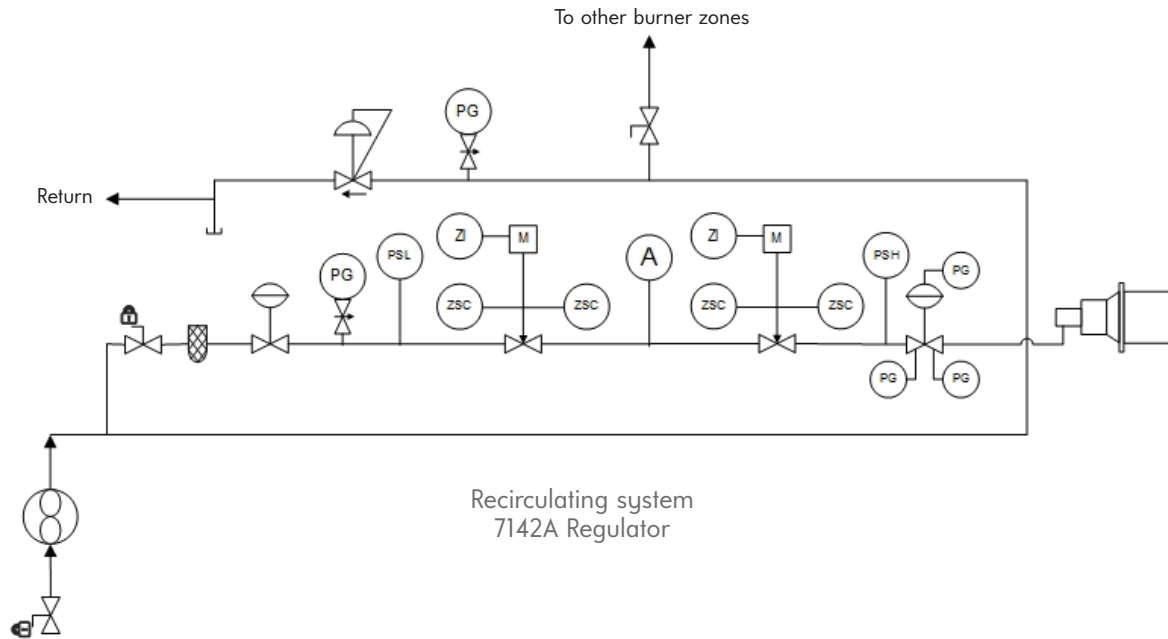


Schematic | Pressure Regulators

LIGHT OIL PIPING SCHEMATIC



The 7142A Regulator can also be used for reducing compressed air supply pressures on the TwinBed II pneumatic control system.

The 7142A Regulator should be installed in the compressed air piping upstream of the cycle control solenoid valves when the plant air supply exceeds 70 psi. A constant supply pressure is desired to avoid cyclic pressure swings. (Reference TwinBed II Pneumatic Piping Schematics 1444A.)

SCFH CAPACITIES COMPRESSED AIR

pressure, outlet	psig inlet	(1/2")		(3/4")		(1")	
		10% droop scfh	20% droop scfh	10% droop scfh	20% droop scfh	10% droop scfh	20% droop scfh
30 psig (15 to 30 psig spring)	40	1700	3000	3500	6000	4000	8000
	50	2000	3400	4100	7100	5600	10000
	75	2500	3900	5400	8500	7600	13000
	100	3000	4400	6700	9900	9600	16000
	150	3500	5100	6600	10000	12000	19000
	200	4000	5800	6400	10000	15000	21000
	250	4800	6400	6400	11000	15000	21000
50 psig (25 to 75 psig spring)	60	2500	4500	5900	9500	5500	12000
	75	3100	5200	6500	11000	8500	14000
	100	3800	6200	8100	13000	10000	18000
	150	4800	7300	9500	15000	14000	22000
	200	5800	8500	11000	17000	18000	26000
250	6500	8900	12000	17000	18000	28000	
75 psig (70 to 150 psig spring)	100	3000	6700	10000	17000	12000	19000
	125	4100	7700	12000	18000	15000	24000
	150	5200	8600	13000	20000	18000	28000
	200	7300	11000	16000	24000	23000	37000
	250	8300	12000	16000	25000	24000	38000