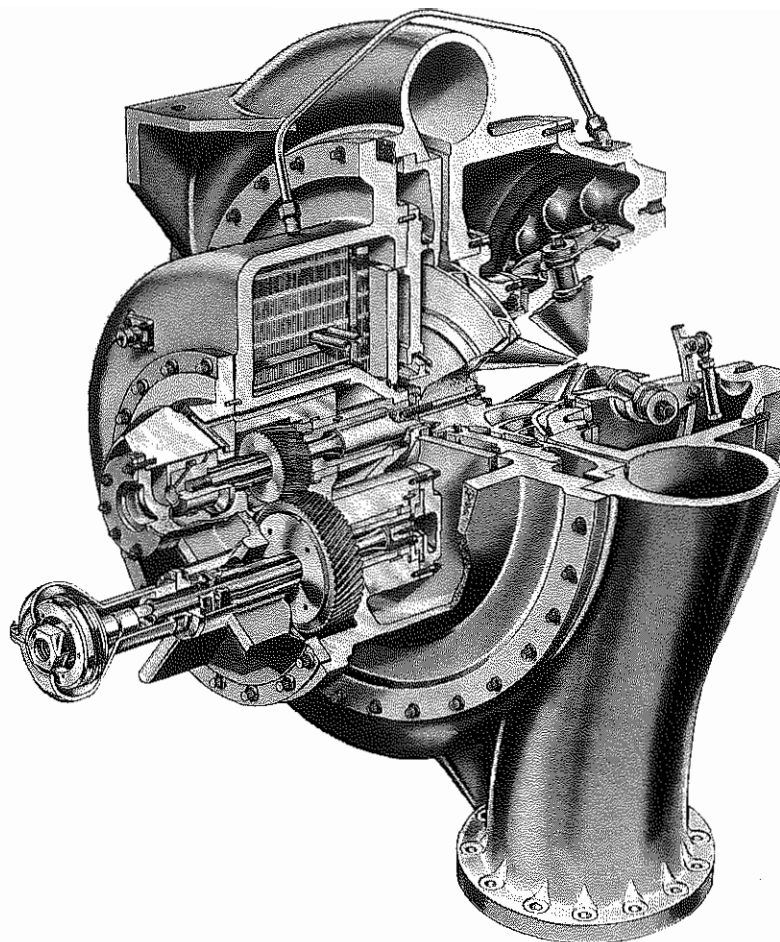


**MODELS OT A1 A3 THRU OT K3 E3 (STYLE B) (STYLE C)  
COMPRESSORS  
MODELS LTD53 THRU LTD126**



REFER TO COMPLETE PARTS LIST PAGES 3 THRU 9 FOR REPLACEMENT COMPRESSOR PARTS. THE VARIOUS UNITS ARE LISTED WITH THEIR RESPECTIVE COMPRESSOR. TO LOCATE PARTS USE THE PARTS LIST, VARIABLE PARTS TABLE AND FIG'S. LISTED ON THE CHART BELOW.

COMPR. CODE	COMPR. MODEL	PART NO'S.		VARIABLE PARTS		SEE FIG'S.
		60 CYCLE	50 CYCLE	TABLE	PAGE	
A3	LTD53	364-42550-002	364-42550-002 364-42550-006	1	10	1 THRU 8
A4	LTD59	364-42550-004	364-42550-004 364-42550-008			
B1	LTD67	364-42552-002	364-42552-002	2	16	9 THRU 17
B2	LTD76	364-42552-004	364-42552-004			
C1	LTD85	364-42554-002	364-42554-005	3	22	18 THRU 26
C2	LTD95	364-42554-003 364-42554-004	364-42554-004			
E1	LTD108	364-42556-002	364-42556-002	4	28	27 THRU 33
E2	LTD120	364-42556-004	364-42556-004			
E3	LTD126	364-42556-006	364-42556-006			