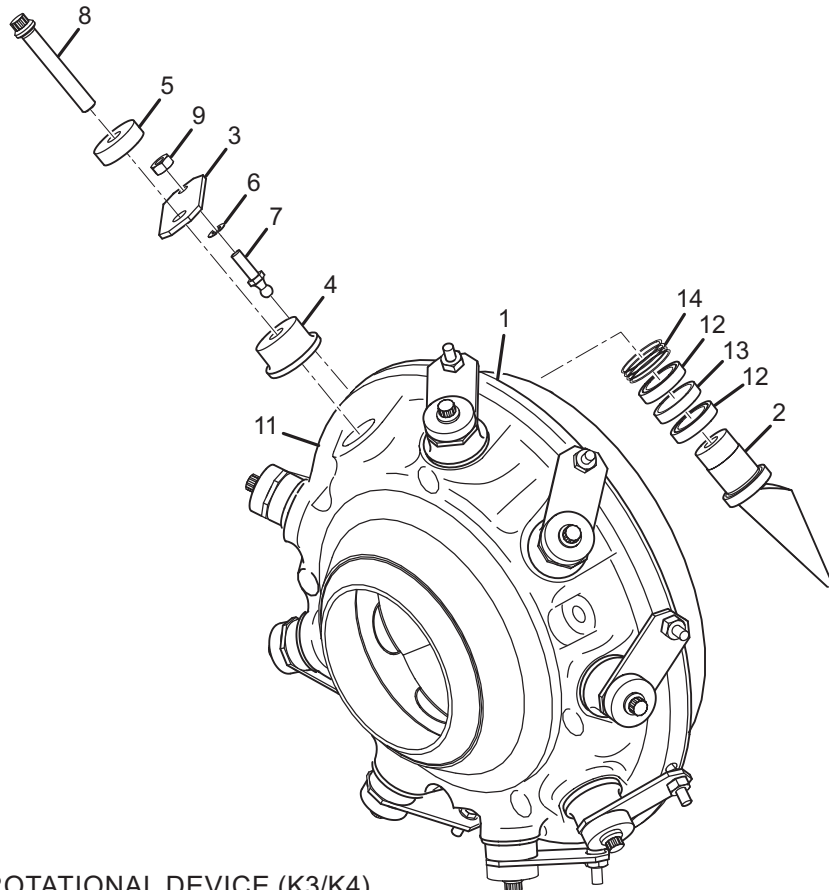


## PRE-ROTATIONAL DEVICE

**TABLE 23 - PRE-ROTATIONAL DEVICE (K3/K4)**

ITEM	DESCRIPTION	PART NUMBER	QUANTITY	FIGURE
-	Pre-Rotational Device Assembly (K3)	364 51772 000	1	-
-	Pre-Rotational Device Assembly (K4)	364 51772 001	1	-
1	Ring, Vane Driving	064 51771 000	1	47
2	Vane, Pre-Rotation	064 51769 000	9	47
3	Arm, Pre-Rotation Vane	064 47508 000	9	47
4	Spacer, PRV Arm	064 51652 000	9	47
5	Washer, Special Prv Tj-Cb	064 47516 000	9	47
6	Washer, Plain Lt 17/64 Id 1/2	021 11973 000	18	47
7	Stud, Ball 1/4 -28 Unf W/	029 15924 000	9	47
8	Screw, Cap 12 Pt Hd 1/2	021 11515 000	9	47
9	Nut, Self Lock 1/4 - 28unf	021 12943 000	9	47
11	Housing, PRV K3	064 51770 000	1	47
	Housing, PRV K4	064 51807 000	1	47
12	Bearing, Ball Deep Groove	029 25085 000	18	47
13	Spacer, PRV Bearing	064 51646 000	9	47
14	Spring, Overlap Type Wave	029 25086 000	18	47

NOTE: Items with an \* are NOT represented.



**FIGURE 47 - PRE-ROTATIONAL DEVICE (K3/K4)**

LD15093