

WATERBOX GASKETS (CONT'D)

TABLE 41 (CONT'D) - CONDENSER COMPACT WATERBOXES 150 PSI

SHELL CODE	1 PASS		2 PASS		3 PASS	
	GASKET P/N	FEET REQUIRED	GASKET P/N	FEET REQUIRED	GASKET P/N	FEET REQUIRED
RQ-RS	028-03242-000	26.4'	028-09951-000	4'	028-09951-000	7.5'
R2-R4			028-03242-000	26.4'	028-03242-000	26.4'
SQ-SS						
S2-S4						
TP-TS	028-03242-000	28'	028-09951-000	4.4'	028-09951-000	8.6'
T2-T5			028-03242-000	28'	028-03242-000	28'
VP-VS						
V2-V5						
WQ-WS						
W1-W4						
XQ-XS	028-03242-000	30'	028-09951-000	4.7'	028-09951-000	9.2'
X2-X3			028-03242-000	30'	028-03242-000	30'
ZQ-ZS						
Z1-Z4						

NOTE: When ordering Gasket Material specify length required by replacing the -000 with either -025 for 25', -050 for 50', or -100 for 100'.

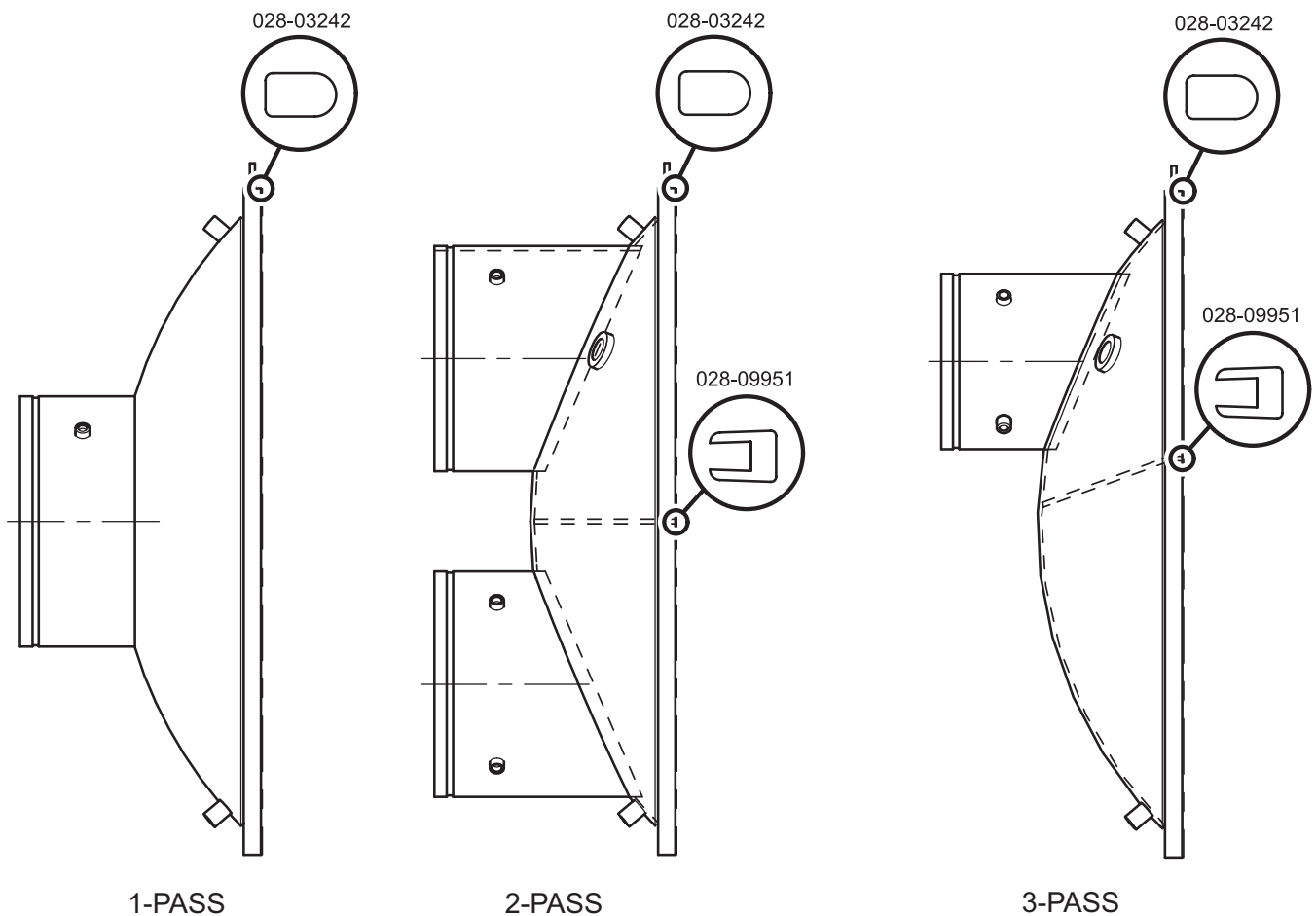


FIGURE 41 - CONDENSER 150 LB. WATERBOX GASKET