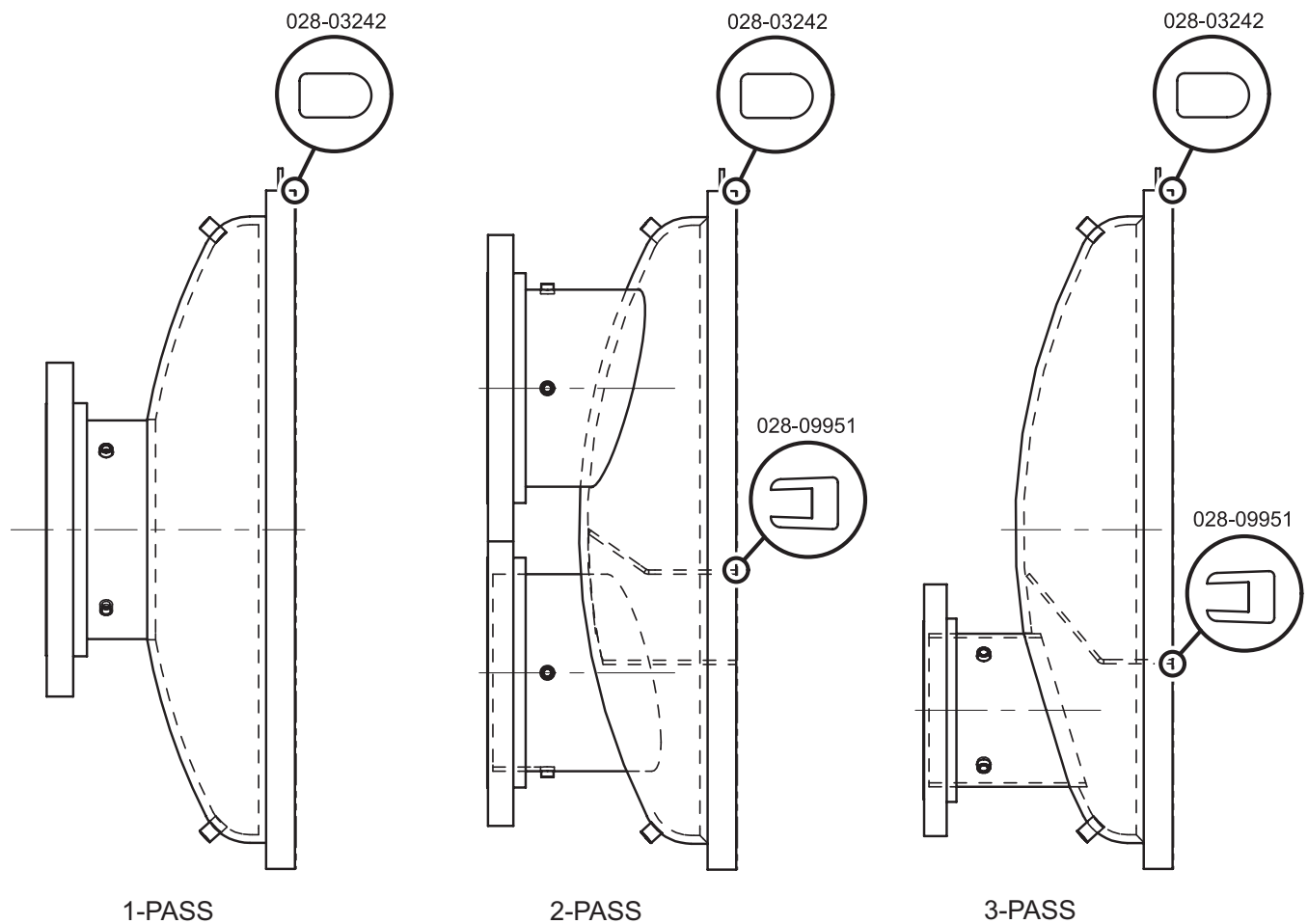


## WATERBOX GASKETS (CONT'D)

**TABLE 44 (CONT'D) - EVAPORATOR WITH STANDARD COMPACT WATERBOXES 300 PSI**

SHELL CODE	1 PASS		2 PASS		3 PASS	
	GASKET P/N	FEET REQUIRED	GASKET P/N	FEET REQUIRED	GASKET P/N	FEET REQUIRED
RQ-RV	028-03242-000	32.5'	028-09951-000 028-03242-000	5.5' 32.5'	028-09951-000 028-03242-000	5.5' 32.5'
R2-R7						
SQ-SV						
S3-S7						
WP-WT						
W1-W6						
XQ-XS	028-03242-000	32.5'	028-09951-000 028-03242-000	5.5' 32.5'	028-09951-000 028-03242-000	10' 32.5'
X2-X4						
ZQ-ZS						
Z1-Z4						

**NOTE:** When ordering Gasket Material specify length required by replacing the -000 with either -025 for 25', -050 for 50', or -100 for 100'.



LD13150

**FIGURE 47 - EVAPORATOR 300 LB. WATERBOX GASKET**