

WATERBOX GASKETS (CONT'D)

TABLE 22 - EVAPORATOR COMPACT WATERBOXES 150 PSI

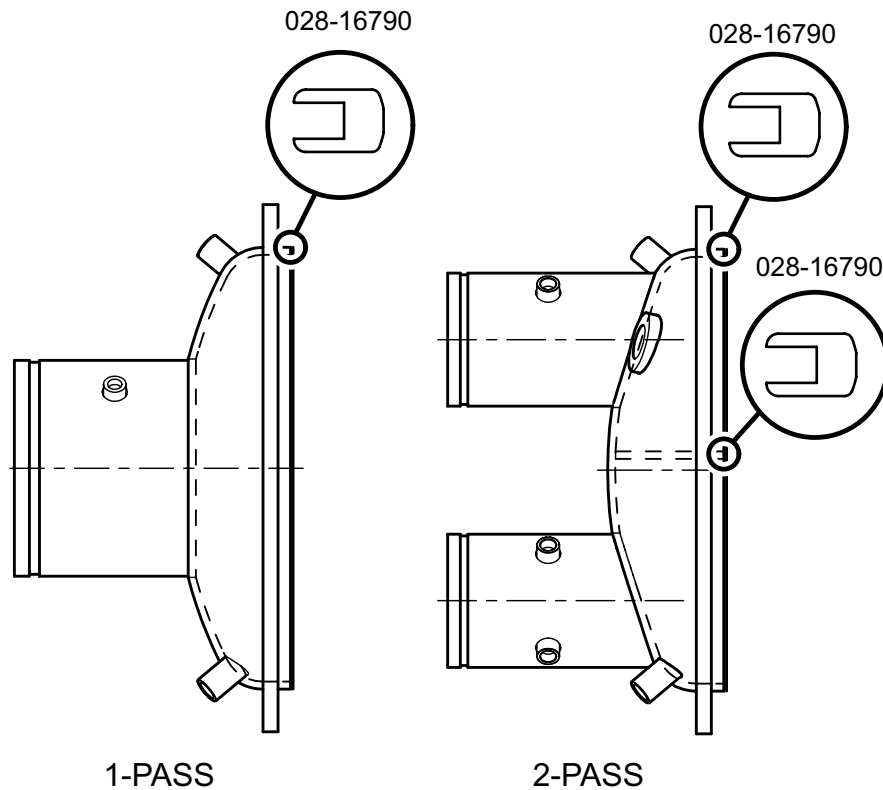
SHELL CODE	1 PASS		2 PASS	
	GASKET P/N	FEET REQUIRED	GASKET P/N	FEET REQUIRED
2C, 2D, 2E	028-16790	2'	028-16790	2'
4C, 4E, 4F, 4G	028-16790	2.5'	028-16790	2.5'
6A, 6B, 6C, 6D, 6E, 6F	028-16790	3'	028-16790	3'

NOTE: When ordering Gasket Material specify length required by replacing the -000 with either -025 for 25', -050 for 50', or -100 for 100'.

TABLE 23 - EVAPORATOR MARINE WATERBOXES 150 PSI

SHELL CODE	1 PASS		2 PASS	
	GASKET P/N	FEET REQUIRED	GASKET P/N	FEET REQUIRED
2C, 2D, 2E	028-16790	23"	028-16790	15"
4C, 4E, 4F, 4G	028-16790	27.5"	028-16790	18"
6A, 6B, 6C, 6D, 6E, 6F	028-16790	31.5"	028-16790	20.5"

NOTE: When ordering Gasket Material specify length required by replacing the -000 with either -025 for 25', -050 for 50', or -100 for 100'.



LD19798

FIGURE 37 - EVAPORATOR WATERBOXES 150 PSI